

REGISTRATION FORM CONT...

SKILL LABS **Skill Labs are limited to 15 people**

WEDNESDAY — MAY 15, 2013

2:00PM SKILLS LAB

- Prescription Drug Abuse – Tom Harper from DOPL
- Interesting X-rays – Christopher Parr, MD
- Neuro Exam: Where is the Lesion? – Navin K. Varma, MD

3:00PM SKILLS LAB

- Prescription Drug Abuse – Tom Harper from DOPL
- Interesting X-rays – Christopher Parr, MD
- Neuro Exam: Where is the Lesion? – Navin K. Varma, MD

4:00PM SKILLS LAB

- Prescription Drug Abuse – Tom Harper from DOPL
- Interesting X-rays – Christopher Parr, MD
- Neuro Exam: Where is the Lesion? – Navin K. Varma, MD

THURSDAY — MAY 16, 2013

2:00PM SKILLS LAB

- Top 10 Pediatric Orthopedic Conditions – John Heflin, MD
- Common Childhood Rashes: Lumps & Bumps Not to Miss – David M. Allen, MD
- Medical Malpractice Chart Reviews, How to Not Get Sued – Theodore F. (Tad) Linn, Esq.

3:00PM SKILLS LAB

- Top 10 Pediatric Orthopedic Conditions – John Heflin, MD
- Common Childhood Rashes: Lumps & Bumps Not to Miss – David M. Allen, MD
- Medical Malpractice Chart Reviews, How to Not Get Sued – Theodore F. (Tad) Linn, Esq.

4:00PM SKILLS LAB

- Top 10 Pediatric Orthopedic Conditions – John Heflin, MD
- Common Childhood Rashes: Lumps & Bumps Not to Miss – David M. Allen, MD
- Medical Malpractice Chart Reviews, How to Not Get Sued – Theodore F. (Tad) Linn, Esq.

FRIDAY — MAY 17, 2013

2:00PM SKILLS LAB

- Wolf in Sheep's Clothing: Ocular Emergencies That Can Fool You – Mark L. Schluter, MD
- Ankle Pain – David Glover, DPM
- Coding 2014 (ICD 10 Conversion) – Marilyn Holley, RHIT, CPC

3:00PM SKILLS LAB

- Wolf in Sheep's Clothing: Ocular Emergencies That Can Fool You – Mark L. Schluter, MD
- Ankle Pain – David Glover, DPM
- Coding 2014 (ICD 10 Conversion) – Marilyn Holley, RHIT, CPC

4:00PM SKILLS LAB

- Wolf in Sheep's Clothing: Ocular Emergencies That Can Fool You – Mark L. Schluter, MD
- Ankle Pain – David Glover, DPM
- Coding 2014 (ICD 10 Conversion) – Marilyn Holley, RHIT, CPC

FREE SOCIAL & OTHER EVENTS

WEDNESDAY, MAY 15

- # Attending _____ George S. Eccles Dinosaur Park Family Night Buffet, 6:00PM
Sponsored by McKay-Dee Hospital Center



THURSDAY, MAY 16

- # Attending _____ Ladies Luncheon & Fashion Show, 11:30AM
Sponsored by Weber County Medical Society & Alliance



- # Attending _____ President Chad M. Gonzales, MD Reception, 6:30PM
**Seating is limited. Reservations required.
Sponsored by Ogden Regional Medical Center



- # Attending _____ Utah Academy of Family Physicians' Annual Meeting, 5:30PM
**Seating is limited. Reservations required. UAFF Members only & one guest.



REGISTRATION OPTIONS

You may register online at:

www.ogdensurgical.com

or mail completed form and check to:

Ogden Surgical-Medical Society
P.O. Box 9311
Ogden, Utah 84409

BE SURE TO FILL OUT BOTH SIDES OF THIS FORM



Bring a Friend!



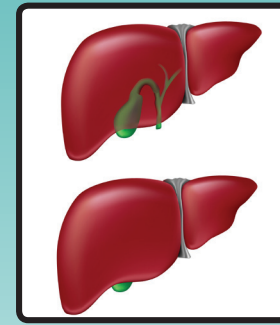
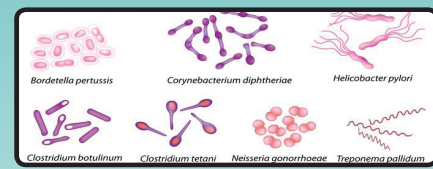
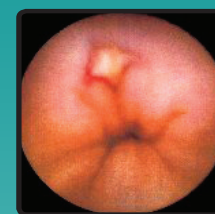
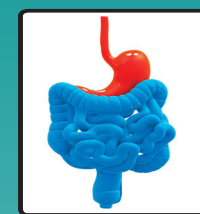
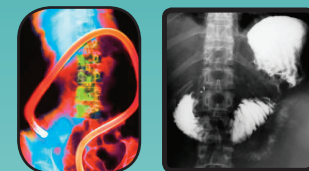
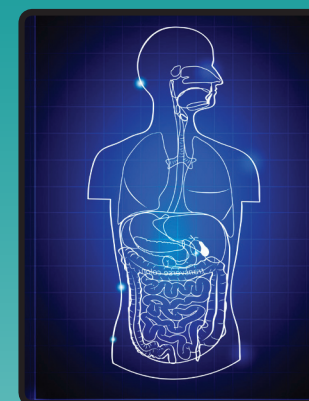
IN PARTNERSHIP WITH:



of Utah and Idaho



68TH ANNUAL SURGICAL-MEDICAL SOCIETY CONFERENCE Primary & Specialty Care Medicine GI UPDATES & ADVANCES 2013



MAY 15, 16, & 17, 2013

**OGDEN ECCLES CONFERENCE CENTER
2415 WASHINGTON BLVD., OGDEN, UT 84401**

www.ogdensurgical.com

ABOUT THE CONFERENCE

Welcome to the 2013 Ogden Surgical-Medical Society's 68th annual conference, "Primary and Specialty Care Medicine, GI Updates and Advances 2013." Over the years, the Society has invited nationally-renowned speakers to Ogden for our annual meeting. This year is no exception. Bringing you a world-class event, our faculty this year includes local and national experts. This conference provides a highly informative and educational experience of interest to all practitioners; we are proud to be the longest serving medical CME conference in the western United States, providing excellent CME at an affordable cost. We also precede the most coveted marathon in Utah, the Ogden Marathon.

We offer a three-topic focus: **Medicine Topics** on Wednesday, **Pediatric Topics** on Thursday, and **Surgery and Obstetrics/Gynecology Topics** as well as **male hormone replacement** on Friday. Each morning begins with the popular thirty-minute sessions of What's New in My Specialty and continues with one-hour sessions mid-morning and afternoon. Many lectures have a GI emphasis. Noon Lunch Lectures are another conference highlight of interest medically, sociologically, and intellectually to all. This year we're delighted to feature Keynote Speakers **Edward James O'Neil Jr., MD**, author of *Awakening Hippocrates: A Primer on Health, Poverty & Global Service and A Practical Guide to Global Health Service*; **Rob Dunn, PhD**, author of *The Wild Life Of Our Bodies: Predators, Parasites, and Partners That Shape Who We Are Today* and *Every Living Thing: Man's Obsessive Quest To Catalog Life, From Nanobacteria To New Monkeys*, has writing focused on the stories of the scientists behind science and their motivations; and **David A. Ansell, MD**, author of *County: Life, Death and Politics at Chicago's Public Hospital, a memoir of his years at Chicago's Cook County Hospital*.

Additionally, you have the option in the afternoon to sign up for **small group sessions** instead of attending one or more of the above-mentioned lectures. These will be **hands-on skills labs** or **mini-medical lectures** that include topics such as Prescription Drug Abuse, Interesting X-Rays, Neuro Exam: Where is the Lesion?, Top 10 Pediatric Orthopedic Conditions, Common Childhood Rashes, Ocular Emergencies That Can Fool You, Ankle Pain, and Coding 2014 (ICD 10 Conversion).

To top off the event, we will enjoy **FREE** evening social events again this year. **Wednesday** night will be the George S. Eccles **Dinosaur Park Family Night** sponsored by McKay-Dee Hospital, **Thursday** night will be the **President's Reception Dinner** at the Ogden Union Station sponsored by Ogden Regional Medical Center and the Utah Academy of Family Physicians' Annual Meeting, and **Friday** night will be the 2013 OSMS **Golf Tournament** sponsored by Ogden Clinic.

We hope to see old friends and new colleagues there.

OGDEN SURGICAL-MEDICAL SOCIETY ENDS POLICY

Attendees specifically and the local community in general will receive a collegial, professional experience focused on health care and community at the greatest possible value.

CONTINUING MEDICAL EDUCATION INFORMATION

The Ogden Surgical-Medical Society is accredited by the Utah Medical Association to provide continuing medical education for physicians.

The Ogden Surgical-Medical Society designates this live activity for a maximum of **25 AMA PRA Category 1 Credits™**. Physicians should claim only the credit commensurate with the extent of their participation in the activity.

American Academy of Family Physicians Accreditation application and awarded credits pending.

2013 BOARD MEMBERS

Chad M. Gonzales, MD, *President*
Navin K. Varma, MD, *President-Elect*
David M. Allen, MD, *Past-President*
Robert Whipple, MD, *Chair*
Marc Johnson, MD, *Vice-Chair*
Frank Brown, MD, *Treasurer*

Heather Heilesen, MD, *CME Chair*
Val Johnson, MD, *Historian/Trustee*
Douglas K. Anderson, MD, *Trustee*
Rhonda Lehr, MD, *Trustee*
Steve Scharmann, MD, *Member-At-Large*
Harry O. Senekjian, MD, *Member-At-Large*

MEETING SCHEDULE

WEDNESDAY, MAY 15

7:00AM	Registration & Breakfast Welcome - Announcements
7:30AM	What's New in My Specialty? GI Complications of Gastric Bypass <i>Caroline Tadros, MD</i>
8:00AM	What's New in My Specialty? Antibiotic Update 2013 <i>Christopher Baliga, MD</i>
8:30AM	What's New in My Specialty? Personalized Medicine & Heart Failure <i>Jerry M. John, MD</i>
9:00AM	What's New in My Specialty? What Really Matters? - Hospice Medicine <i>Karen Wyatt, MD</i>
9:30AM	Break with Exhibitors
10:00AM	Familial Colon Cancer <i>Jewel Samadder, MD</i>
11:00AM	What the LFTs are Telling you- Avoiding Common Mistakes <i>Norman Sussman, MD</i>
12:00PM LUNCH LECTURE	Global Health Inequality: A Call to Understanding & Action <i>Edward James O'Neil Jr., MD</i>
1:30PM	Break with Exhibitors
Lectures are one hour per topic and are only offered once at the times listed below	
2:00PM	Chronic Hepatitis C, ECHO Project <i>Terry Box, MD</i>
3:00PM	Topics in Inflammatory Bowel Disease <i>John F. Valentine, MD</i>
4:00PM	Therapeutic Advances in Clostridium Difficile Infection (Bugs, Drugs, and Stool) <i>Chad M. Gonzales, MD</i>
Skill Labs are one-hour sessions per topic and are offered at 2:00, 3:00, and 4:00PM	
All labs at right are one-hour sessions offered at: 2:00PM 3:00PM 4:00PM	SKILL LAB #1: Prescription Drug Abuse (maximum 15 participants per one-hour session) <i>Tom Harper from DOPL</i>
	SKILL LAB #2: Interesting X-Rays (maximum 15 participants per one-hour session) <i>Christopher Parr, MD</i>
	SKILL LAB #3: Neuro Exam: Where is the Lesion? (maximum 15 participants per one-hour session) <i>Navin K. Varma, MD</i>

THURSDAY, MAY 16

7:00AM	Registration & Breakfast Announcements
7:30AM	What's New in My Specialty? Febrile UTI Update <i>Patrick C. Cartwright, MD</i>
8:00AM	What's New in My Specialty? Pediatric Anxiety/Depression/ADHD <i>Lisa L. Giles, MD</i>
8:30AM	What's New in My Specialty? Pediatric Diabetes <i>David Donaldson, MD</i>
9:00AM	What's New in My Specialty? Pediatric Disorders of Bone Fragility <i>David A. Stevenson, MD</i>
9:30AM	Break with Exhibitors
10:00AM	Pediatric Chronic Abdominal Pain <i>John F. Pohl, MD</i>

MEETING SCHEDULE

THURSDAY, MAY 16 CONTINUED

11:00AM	Consequences of Childhood Obesity: Prepare to Treat a Growing Problem <i>Cristina Lau, MD & Jennifer James, MS, RD, CD</i>
12:00PM LUNCH LECTURE	The Wild Life of Our Bodies and Every Living Thing <i>Rob Dunn, PhD</i>
1:30PM	Break with Exhibitors
Lectures are one hour per topic and are only offered once at the times listed below	
2:00PM	Food Allergies <i>Timothy J. Sullivan, MD</i>

Thursday Afternoon Session below Presented in Conjunction with the National Kidney Foundation of Utah & Idaho

3:00PM	Hypertension: How Should We Manage it in 2013 <i>Barry Stults, MD</i>
4:00PM	Dietary Changes to Slow the Progression of CKD <i>Kalani Raphael, MD</i>
Skill Labs are one-hour sessions per topic and are offered at 2:00, 3:00, and 4:00PM	
All labs at right are one-hour sessions offered at: 2:00PM 3:00PM 4:00PM	SKILL LAB #1: Top 10 Pediatric Orthopedic Conditions (maximum 15 participants) <i>John Heflin, MD</i>
	SKILL LAB #2: Common Childhood Rashes: Lumps & Bumps Not to Miss (maximum 15 participants) <i>David M. Allen, MD</i>
	SKILL LAB #3: Medical Malpractice Chart Reviews, How to Not Get Sued (maximum 15 participants) <i>Theodore F. (Tad) Linn, Esq.</i>

FRIDAY, MAY 17

7:00AM	Registration & Breakfast Announcements
7:30AM	What's New in My Specialty? Gallbladder Disease <i>Robert C. Moesinger, MD</i>
8:00AM	What's New in My Specialty? Breast Cancer <i>Catherine Babcook, MD</i>
8:30AM	Business Meeting: New Officers & Annual Report <i>Robert Whipple, MD</i>
9:00AM	What's New in My Specialty? Management of Endometriosis <i>Jeffrey Arrington, MD</i>
9:30AM	Break with Exhibitors
10:00AM	Resident Program Presentation
12:00PM LUNCH LECTURE	From County to Congress 35 Years as a Primary Care Physician on Chicago's West-side and the Unfinished Business of Health Reform <i>David A. Ansell, MD</i>
1:30PM	Break with Exhibitors
Lectures are one hour per topic and are only offered once at the times listed below	
2:00PM	Bariatric Surgery <i>Eric Volckmann, MD</i>
3:00PM	Postmenopausal Hormone Therapy 2013: Fact vs Fiction; Science vs Myth; and Treatment vs Prevention <i>Alan Altman, MD</i>
4:00PM	Testosterone Therapy in Men: Panacea, Scourge, or The Next Big Thing in Medicine? <i>Abraham Morgentaler, MD</i>

MEETING SCHEDULE

FRIDAY, MAY 17 CONTINUED

Skill Labs are one-hour sessions per topic and are offered at 2:00, 3:00, and 4:00PM	
All labs at right are one-hour sessions offered at: 2:00PM 3:00PM 4:00PM	SKILL LAB #1: Wolf in Sheep's Clothing: Ocular Emergencies That Can Fool You (maximum 15 participants) <i>Mark L. Schluter, MD</i>
	SKILL LAB #2: Ankle Pain (maximum 15 participants) <i>David Glover, DPM</i>
	SKILL LAB #3: Coding 2014 (ICD 10 Conversion) (maximum 15 participants) <i>Marilyn Holley, RHIT, CPC</i>

FREE SOCIAL & OTHER EVENTS

WEDNESDAY, MAY 15

George S. Eccles Dinosaur Park Family Night Buffet

6:00 - 8:30PM
1544 Park Blvd., Ogden
Contact: Teresa at (801) 564-5585
Sponsored by McKay-Dee Hospital Center



THURSDAY, MAY 16

Second Revival of the Ladies Social: Luncheon & Fashion Show

Timberlodge Collection, 11:30AM - 2:30PM
2214 Washington Boulevard, Ogden
Contact: Teresa at (801) 564-5585
All Partners & Guests Invited
Sponsored by Weber County Medical Society & Alliance



President Chad M. Gonzales, MD Reception

Union Station Old Timer's Room, 6:30PM
2501 Wall Avenue, Ogden
Craig Bielik, Comedian & Pam Cannon, Singer/Entertainer
Reception from 6:30 - 7:00PM, Dinner at 7:00PM, Entertainment 7:00 - 8:00PM, Dancing 8:00 - 9:00PM
Contact: Teresa at (801) 564-5585
Seating is limited. Reservations required.
Sponsored by Ogden Regional Medical Center



Utah Academy of Family Physicians' Annual Meeting

UAFP Members only & one guest. Seating is limited. Reservations required.
Reception from 5:00 - 5:30PM & Dinner at 5:30PM
Ogden Eccles Conference Center
2415 Washington Blvd., Ogden
Guest Speaker
Contact: Teresa at (801) 564-5585



DID YOU KNOW?

One-third of patients meet their nephrologist for the first time in the ER ••• Blood pressure is the single most important measurement to slow kidney disease ••• Control of blood pressure is better than control of glucose for cardiovascular outcomes in diabetes patients and tighter control of glucose worsens cardiovascular disease ••• Higher BMI is a predictor of kidney disease ••• Earlier referral to nephrology has reduced kidney disease by 30% in the last 20 years ••• Kidney disease causes more deaths than breast cancer of prostate cancer ••• Serum creatinine alone should not be used to estimate kidney function ••• GFR is the best estimate of kidney function; find the calculator free at www.kidney.org/gfr



REGISTRATION FORM

REGISTRATION INFORMATION

Registration includes:
» Membership in the Ogden Surgical-Medical Society
» Up to 25 Continuing Medical Education Credits
» CD-Syllabus and Conference Materials
» Three days: Breakfast - Lunch - Breaks
» Free Evening Social Events

PARKING

FREE Parking is available at the Junction garage at 24th Street & Grant. It is recommended attendees park in the far southeast corner closest to the conference center. Daytime street parking is limited to two hours and is strictly monitored and ticketed. Hampton Inn guests receive garage parking passes.

PARKING GARAGE: Enter on Kiesel Ave. between 24th & 25th Streets where there are two entrances. The attendant parking has a gated entrance. Attendees will be charge \$5 for entry (cash or charge). Once the garage is full, the attendant will direct parking to the Self-Pay Honor Lot. The attendant will collect the \$5 and give the guest a voucher that must be placed in the payment box that matches their numbered parking spot. Guests must put money or the voucher from the attendant into the slot that matches their numbered parking spot. Conference organizers do not have control of the honor lot. The parking management company will ticket anyone who fails to provide payment or a voucher in the pay box.

SPECIAL NEEDS

The Ogden Surgical-Medical Society and the Ogden Eccles Conference Center fully comply with the legal requirements of the American Disabilities Act and the rules and regulations thereof. If any participant is in need of accommodations, please call Teresa Puskedra at (801) 564-5585.

FOR MORE INFORMATION

Web Page: www.ogdensurgical.com
Executive Director:
Teresa Puskedra, (801) 564-5585
teresapuskedra@ogdensurgical.com

HOTEL ACCOMMODATIONS

Hampton Inn & Suites
(800) 426-7866 or (801) 394-9400
2400 Washington Blvd. Ogden, Utah 84401 (Adjacent to Conference Center)
Free parking in rear
When making reservations, use
Group Name: SMS
To make reservations on-line, go to link: www.ogdensuites.hamptoninn.com

Comfort Suites
2250 South 1200 West, Ogden, Utah 84401
(800) 462-9925 or (801)621-2545
When making reservations, use
Group Name: OSMS
To make reservations, on-line, go to link: www.ogdencomfordsuites.com

Name _____

Year Graduated from Medical School or other Medicine Program _____

Address _____

City _____ State _____ Zip _____

Phone _____

Email Address _____

Check All That Apply

Dues/Registration Fees if Paid by April 19, 2013

- Membership Dues already paid for 2013
- \$325 Active Physician Member*
- \$250 Mid-level Provider*
- \$150 Retired Member*
- \$100 Nurses/Auxiliary*

Dues/Registration Fees if Paid after April 19, 2013

- \$375 Active Physician Member*
- \$300 Mid-level Provider*
- \$175 Retired Member*
- \$125 Nurses/Auxiliary*

I am the guest of an existing member

If you are a *guest*, please select your additional options:

- Breakfast (\$15.00) x ____ days.
- Lunch (\$25.00) x ____ days.

*Includes Membership, Registration, Fees, CME Credits and Certificate, CD-Syllabus, Breakfast, Lunch and Breaks.

Yes! I want to participate in the 2013 OSMS Golf Tournament sponsored by Ogden Clinic at the El Monte Golf Course after 5PM on Friday, May 17th. This 9-hole Scramble Tournament is \$23 per player and includes green fees, cart, and driving range use. Fee to be paid at the El Monte Golf Course Friday, May 17th.



No, I would not like to be included in mailings from Ogden Surgical-Medical Society affiliated organizations.

BE SURE TO FILL OUT BOTH SIDES OF THIS FORM